

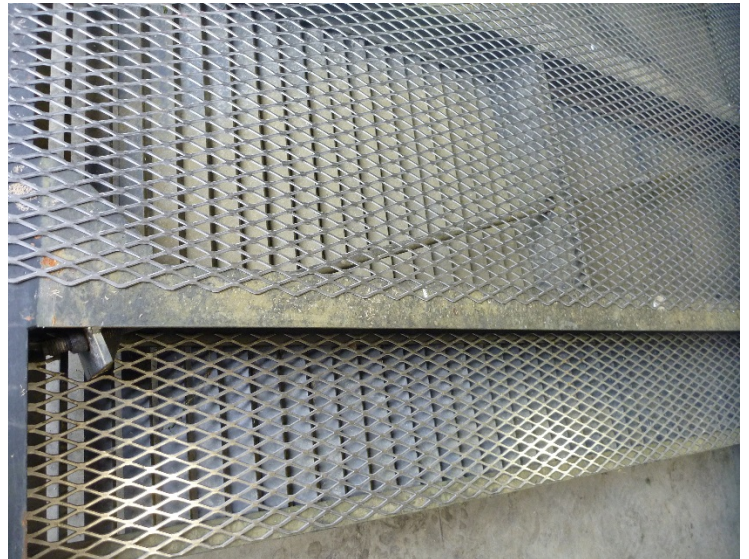
MEMORANDUM FOR THE RECORD

SUBJECT: 16BON44 MFR – Lamprey mortalities at Bradford Island count station crowder.

On 23 June, Project Biologists recovered two Pacific Lamprey mortalities from the picket leads behind the Bradford Island count station crowder. The fish were not photographed or scanned for tags. On 22 June, the structural crew placed mesh screen behind the count station section of picket leads due to concerns by Project Fisheries that lamprey could potentially move through the ¾” pickets (photos below). In addition, a lamprey trap has been constructed, supplied by water from a pump, and placed next to the picket leads and have thus far removed two live lamprey from the area behind the crowder; they were transferred to the AWS.

Information collected is provided below:

- A. Species – Pacific Lamprey (*Entosphenus tridentatus*).
- B. Origin – Unknown
- C. Length – Unknown
- D. Marks and tags – None
- E. Marks and Injuries found on carcass – None
- F. Cause and Time of Death – Unknown
- G. Future and Preventative Measures – We are attempting to trap any fish currently in the area behind the BI count station for removal.



Sincerely,
Bonneville Fisheries